



WIRE COMPOSITIONS

WHEN DIFFERENT METALS GO TOGETHER FOR YOUR PRODUCT

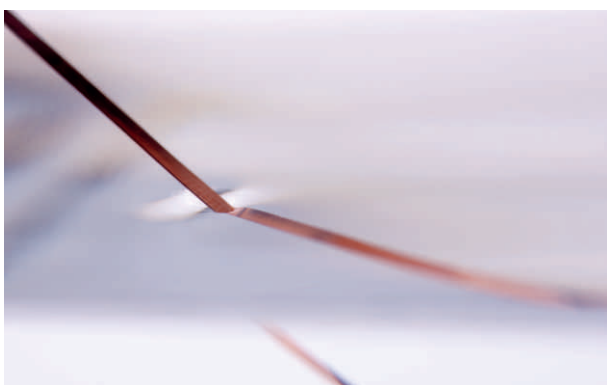
ELSCHUKOM wire compositions offer the possibility of combining diverse properties of a wide range of metallic materials in many different ways. In the process, the metallic materials are bundled together to form an inseparable compact new wire.

SHEATHED WIRE.

We offer the majority of the **ELSCHUKOM** material range with different metallic coatings.

The desired sheathed wire is built up from the selected base metal and one or more metallic layers – usually via an electroplating process.

With our innovative continuous process we specialise in fine and extra-fine wires down to $\varnothing 0.006$ mm. It offers the highest precision in terms of the individual coating layers, the wire diameter, the electrical resistance and the surface quality.

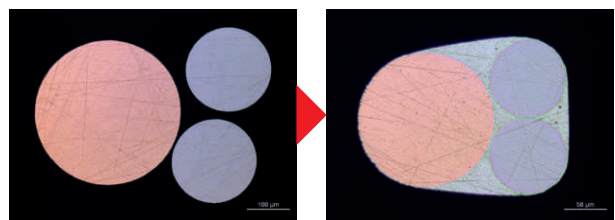


preparing a flat wire for the coating process

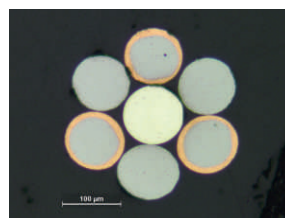
SPECIAL SOLUTIONS.

In addition to sheathed wires we also offer special solutions to achieve the desired wire properties. First, we assemble the various individual wires from the **ELSCHUKOM** range of materials. Then the individual wires are joined to form the specified wire composition in a continuous process using various production methods.

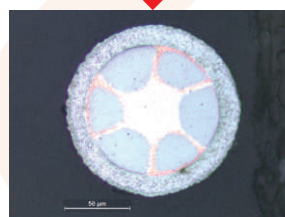
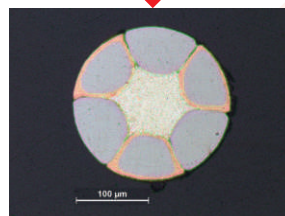
- by dip soldering or hot tinning with standard solders or various special solders



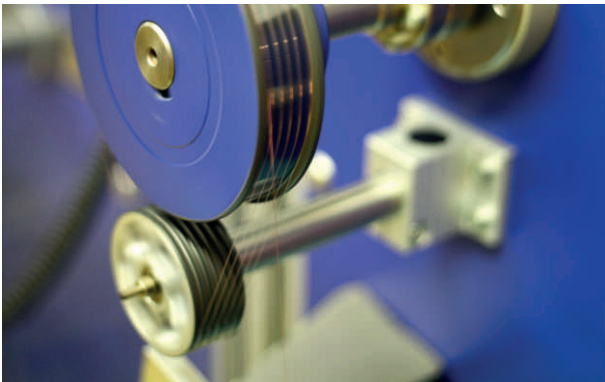
transverse section for schematic representation of a process for the production of multiple wires



- by joining in the drawing process with subsequent possibility of sheathing as well as final drawing to a defined target diameter



transverse section for schematic representation of a process for the production of multiple wire



DELIVERY TYPE.

composition wires are usually available as round wire in the dimensional range from \varnothing 0.800 mm to \varnothing 0.010 mm.

coil design

| diameter in mm | recommended coil | recommended weight per coil in g |
|----------------|------------------|----------------------------------|
| 0.010 – 0.025 | K50 | 10 – 20 |
| 0.015 – 0.080 | K50 | 50 – 150 |
| 0.015 – 0.160 | K63 | 200 – 300 |
| 0.080 – 0.400 | K80 | 800 – 820 |
| 0.250 – 0.800 | K160 | 5000 – 6000 |

(ELSCHUKOM standard, deviations possible on request)

furthermore, customer-specific flat and profiled wires as well as customised and surface-treated wire solutions can also be provided. our information sheet „flat and profiled wires“ provides inspiration for this.

TYPICAL METAL COMPONENTS.

| coating material | standard coatings |
|-----------------------|--------------------------------------|
| Sn (matt or shiny) | flash-plated with tin, 5 – 50 %* |
| Ni | flash-plated with nickel, 5 – 10 %* |
| Cu | flash-plated with copper, 5 – 25 %* |
| Ag | flash-plated with silver, 1 – 50 %** |
| Au / AuCo | 0.1 – 0.3 μ m |

the above values are **ELSCHUKOM** standard values, customer requests will be reviewed individually.

* related to the core wire diameter

** coating in weight per cent

PREVIOUS APPLICATIONS OF OUR WIRE COMPOSITIONS.



FUSES.



SENSORS.



HOME ELECTRONICS.

as well as for:



CUTTING WIRES.

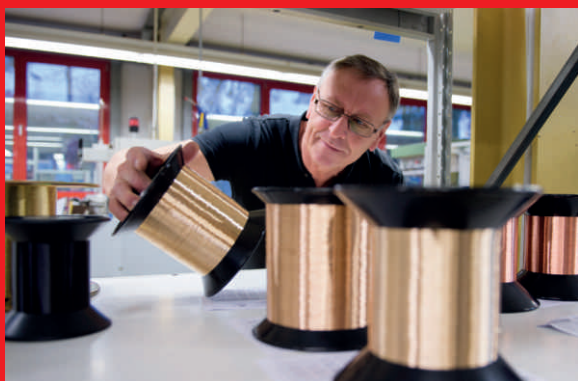


STRANDED WIRES.



FLAT WIRE.

would you like to learn more about our wire compositions?
ask for our data sheets or contact us directly:



ELSCHUKOM gmbh
gewerbestraÙe 87
98669 veilsdorf
germany

phone. +49 (0) 36 85 41 91-50
fax. +49 (0) 36 85 41 91-599
email. info@elschukom.com
internet. www.elschukom.com



YVONNE BRANDT
head of sales

telefon. +49 (0) 36 85 41 91-531
email. yvonne.brandt@elschukom.com